



# ***NHS Sustainable Development Unit***

*An Unhealthy Climate?*

*Calling for action and changing behaviour*

*20<sup>th</sup> November 2008*

**david.pencheon@sdu.nhs.uk**

***www.sdu.nhs.uk***

**NHS**  
***Sustainable  
Development Unit***



# 1. Link all the issues:

## *Drivers for the future*

- **Credit crunch** - funding the NHS
- **Energy crunch** – fuelling the NHS
- **Climate crunch** – NHS adapting to and mitigating climate change
- *Inequality and migration crunch*

*“Joined-up policies to solve the triple crunch of the credit crisis, climate change and high oil prices” - new economics foundation. Published July 2008*

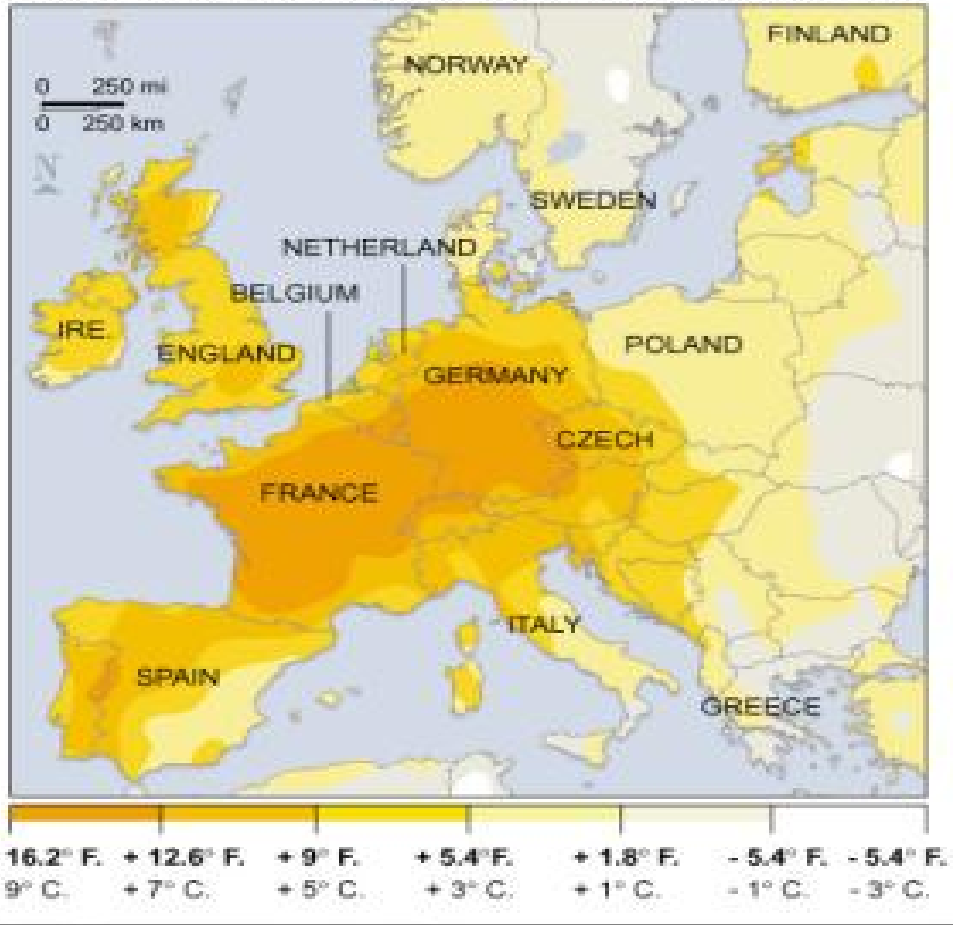
*ISBN 978 1 904882 35 0*

# 2. The time is now

## Deadly heat wave holds firm in Europe

Temperatures throughout Europe continued above normal, as France reported as many as 3,000 deaths due to the heat.

Difference from normal temperatures Aug. 3 to Aug. 9, 2003



SOURCE: Climate prediction center, NOAA.

AP

At least 15,000 people died prematurely as a result of Europe's heat wave in 2003 in France<sup>1</sup>

1. Unprecedented heat-related deaths during the 2003 heat wave in Paris: consequences on emergency departments

Jean-François Dhainaut, Yann - Erick Claessens, Christine Ginsburg, and Bruno Riou.

Crit Care. 2004; 8(1): 1-2.

Published online 2003 December 4. doi: 10.1186/cc2404.

**NHS**

**Sustainable  
Development Unit**



### 3. Know the numbers

and how to communicate them:

*e.g. Carbon Footprint in NHS England*

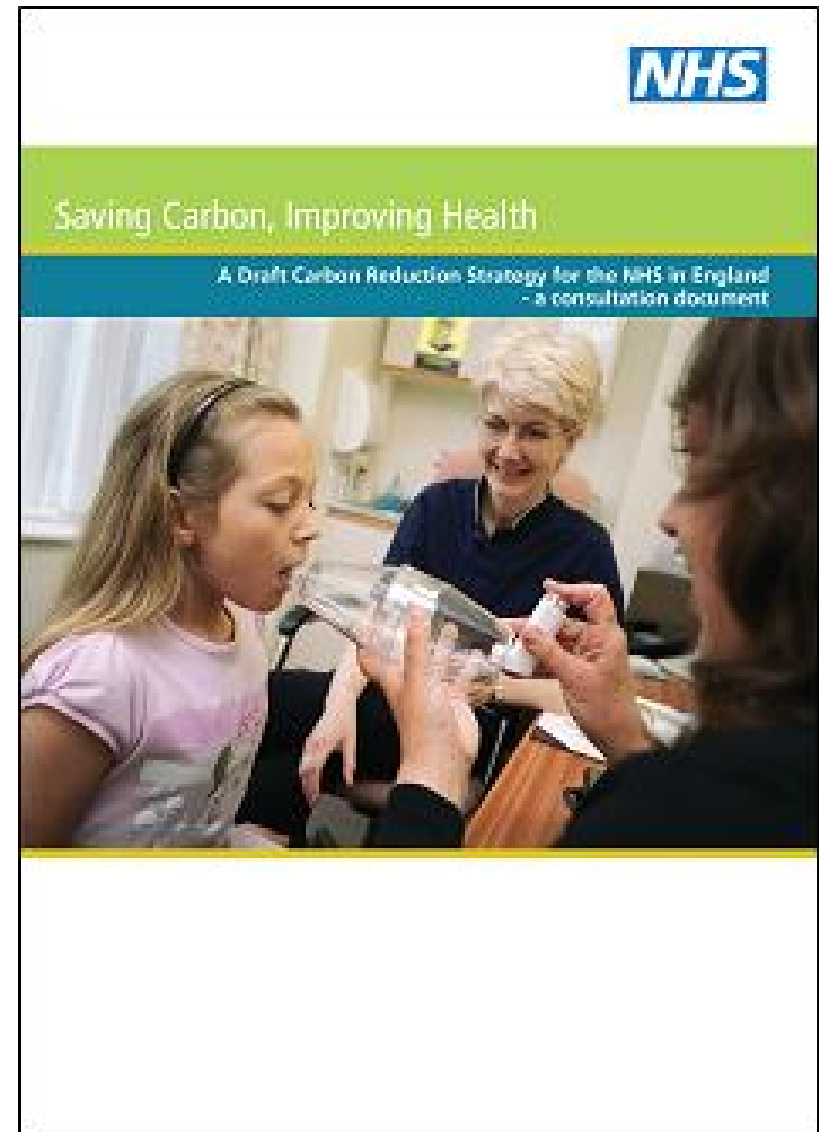
- **Measuring and understanding the NHS carbon footprint in England**
  - 18 m tonnes carbon dioxide eq. per annum
    - **Energy:** heating, lighting, hot water, ventilation, cooling = 22%
    - **Travel:** patients, staff, visitors = 18%
    - **Procurement:** supply chain activities of companies producing goods and services = 60%

**4. Get buy in:  
Saving Carbon,  
Improving Health: draft  
NHS Carbon Reduction  
Strategy for consultation.  
May - Sept 08**

*Early results:*

- very high response rate
- very positive
- strong need for central support / guidance / performance management / regulation

[www.sdu.nhs.uk](http://www.sdu.nhs.uk)




**NHS**  
**Sustainable  
Development Unit**



## 5. Know why you (NHS) should act/lead

1. Potentially big savings in big organisations
  - immediate, and Return on Investment
  - energy, procurement, travel, waste, low carbon buildings
2. Health is a core business objective of the NHS
3. Need for resilience, adaptability, and flexibility
  - flu, floods, fuel, heatwaves
4. **Need to be exemplar – visible, evaluated case studies that prove progress is possible**
  - UK public, and internationally
  - Excellence already exists in the NHS but not widely implemented
5. Opportunities for immediate health co-benefits
  - Physical activity and obesity / CHD / diabetes / Air pollution / Transport trauma / Mental health



# 7. Look outside your silo, look to the future, and be transformational

1. Department of Energy and Climate Change established, 3rd Oct 2008
2. Interim advice published from Committee on Climate Change, 7th Oct 2008:  
Greenhouse gas emission target should be 80% below 1990 levels by 2050
3. Copenhagen Nov/Dec 2009



# 8. Make it personal:

1. **Chair:** Sustainability objective in every non Exec member - Carbon Trust and NHS Good Corporate Citizen sign up
2. **CEOs:** SD / CSR / GCC corporate strategy/policy
3. An Exec and **non-exec** lead with reporting mechanisms
4. Sustainability objective in every **Executive team member**
5. Climate change > a specific section on **risk register**
6. **Finance:** shadow carbon pricing, carbon standard, Salix
7. **Performance:** CQC, Operating Framework, CRC
8. **Estates/facilities:** Measuring in as many departments as possible: smart metering (*50% of Year 1 CRC*)
9. Access and travel planning – sustainable **access**, Liftshare
10. **Commissioning** and **Procurement** criteria and standards
11. **Workforce.** Board development > staff development / T&C
12. **Comms:** Staff and public buy-in, corporate objectives and image, website



*Sustainable  
Development Unit*



# 9. Use tested examples

- Travel planning
- Smart metering
- Energy efficiency of new buildings



# Smart meters: CO<sub>2</sub> footprint

Understanding carbon footprints (literacy/numeracy):

- (Shadow) carbon pricing £12 a ton
- Carbon allowances
- Micro-metering – wireless energy monitors at home and at work
- Understanding embedded carbon in ALL products and services (e.g. procurement)





- 15 GJ/100m<sup>3</sup>/year
- There was no cost premium for the sustainable design.
- Carbon dioxide emissions are only 31 tonnes/year, so climate change levy payments will be low
- Patient and staff experience highly favourable



# 10. Go for heart and head

- You now know some of the data, the research, the opportunities, the solutions, the business cases, the chance to go from a good leader to a great leader....
- *This will define your life, personal and professional. This is happening now, on your watch. It will be your legacy: to your children and your grandchildren...*