

‘What was the question?’

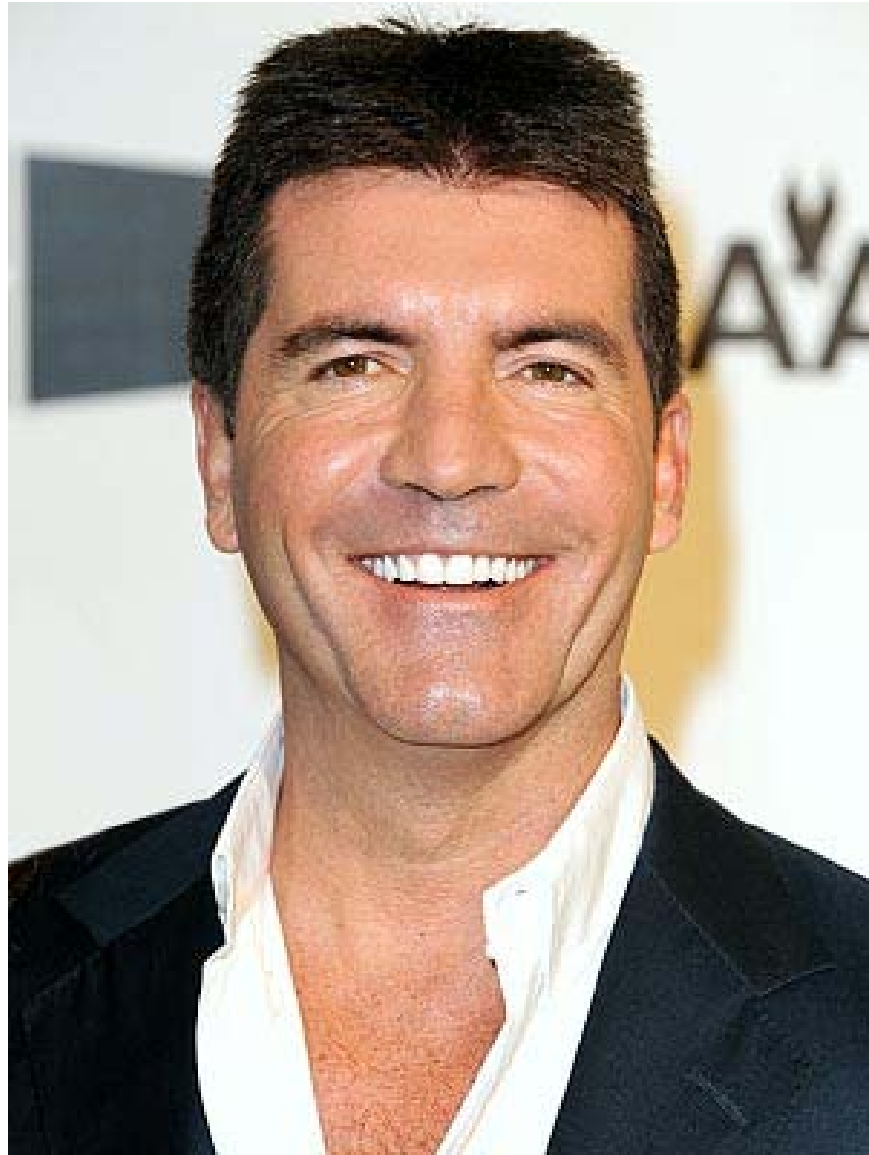
Inside the examiners mind

- David Baxendale
- EH Manager
- North Warwickshire
BC



Where to start

- **CIEH examination regulations -**
- The Professional Examination for those students enrolled under the 2003 curriculum shall consist of: The ‘Part 2’ examination
- The ‘Part 2’ examination shall comprise a single **substantial case study paper** and an interview. The case study will be **intervention based** and will cover at least **two different intervention groups** (i.e. health & safety, food, environmental protection, housing and public health)



Where next?

- CIEH website
- PAST EXAM PAPERS
- Practice, share and compare



Then what? ... IN THE EXAM!

- **READ THE QUESTION**
- **READ THE QUESTION**
- **READ THE QUESTION**
- Plan your time
- Plan your (draft) answers
- **Write** your answers
- **Check** your answers
- Use ALL the available time

Tips for success

- Don't panic, you are not alone. Day one 'authority' and responsibility levels. Imminent risk?, mobile phones
- The truth is in there - no memory games and no tricks
- Say what you see - communication is key - don't ASSUME
- If I can't read it, I can't mark it!
- Marking criteria are ABSOLUTE not RELATIVE
- Think personal safety - no dead heroes - proper jobs take time
- Remember the mission - and the audience ... FOCUS
- Most will pass first time, some need another go - no shame!
- It's a stepping stone, not a finishing line