



South West Climate Change  
Impacts Partnership (SWCCIP)

# **South West Climate Change Impacts Partnership – impacts and adaptation for CIEH**

Alex Webb

SWCCIP Manager

28<sup>th</sup> November 2007

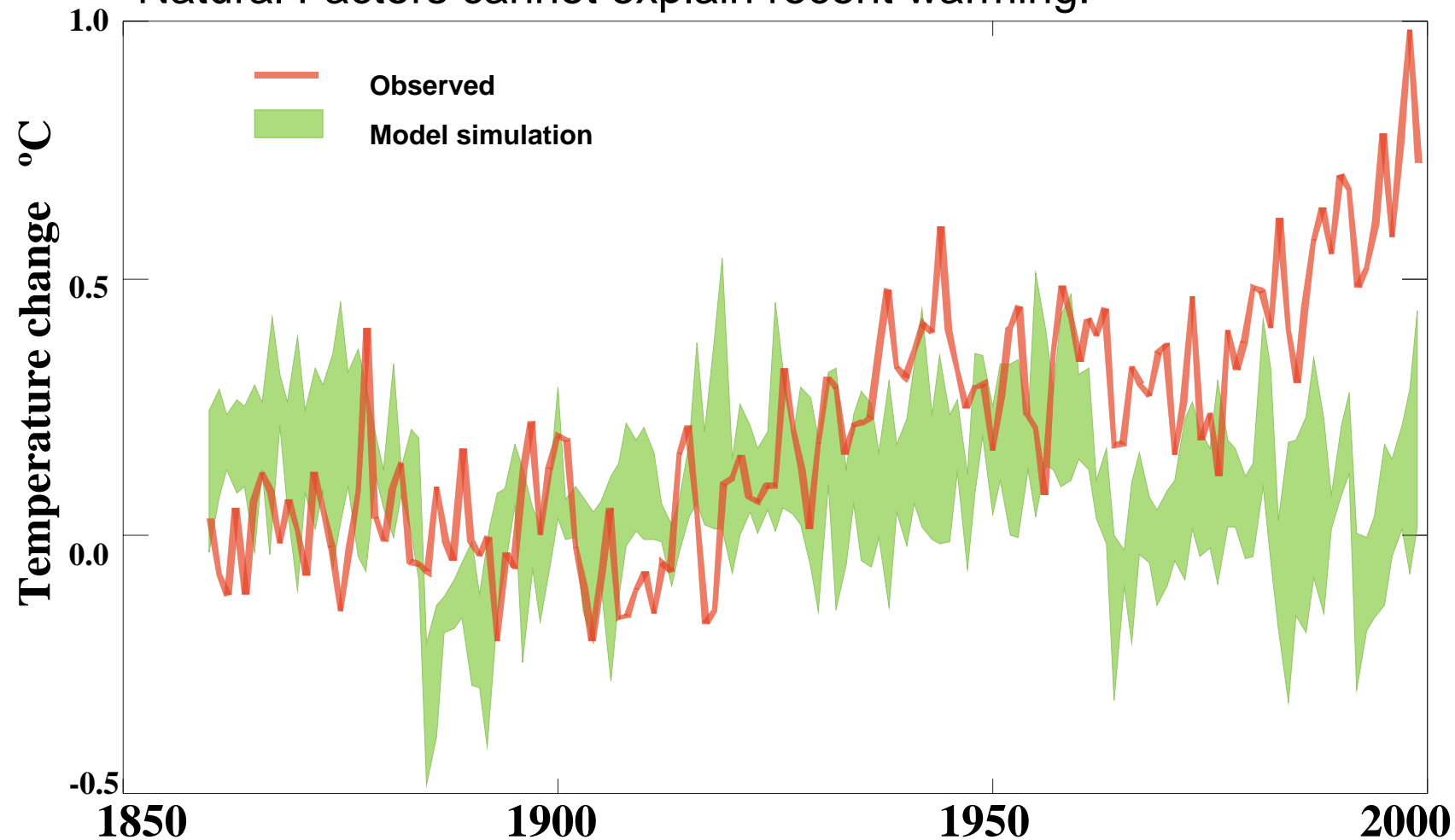


# Presentation Overview

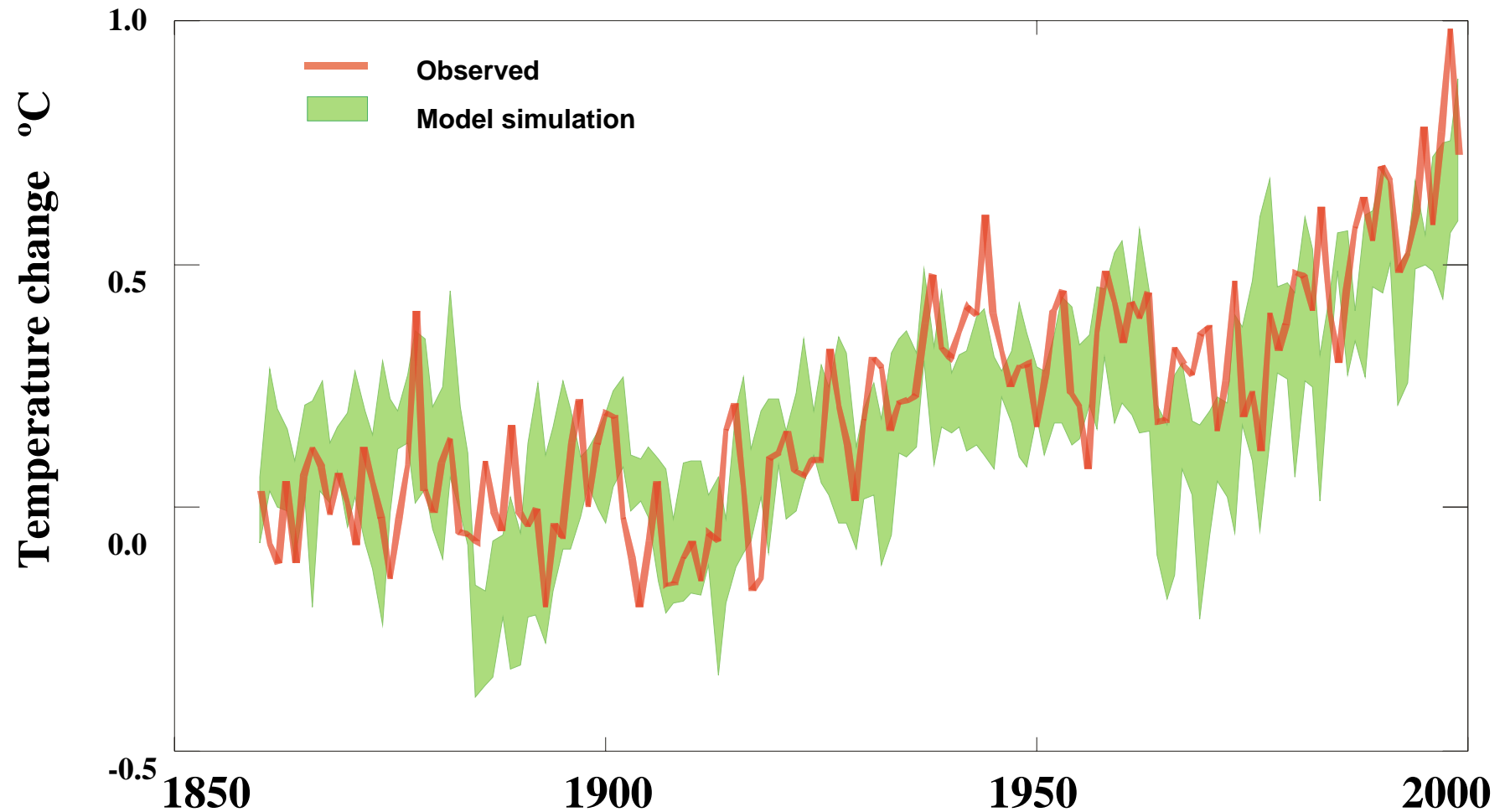
- Climate Change and Adaptation - why is it important?
- Who are SWCCIP?
- Regional impacts and opportunities for the health sector
- What can you do?



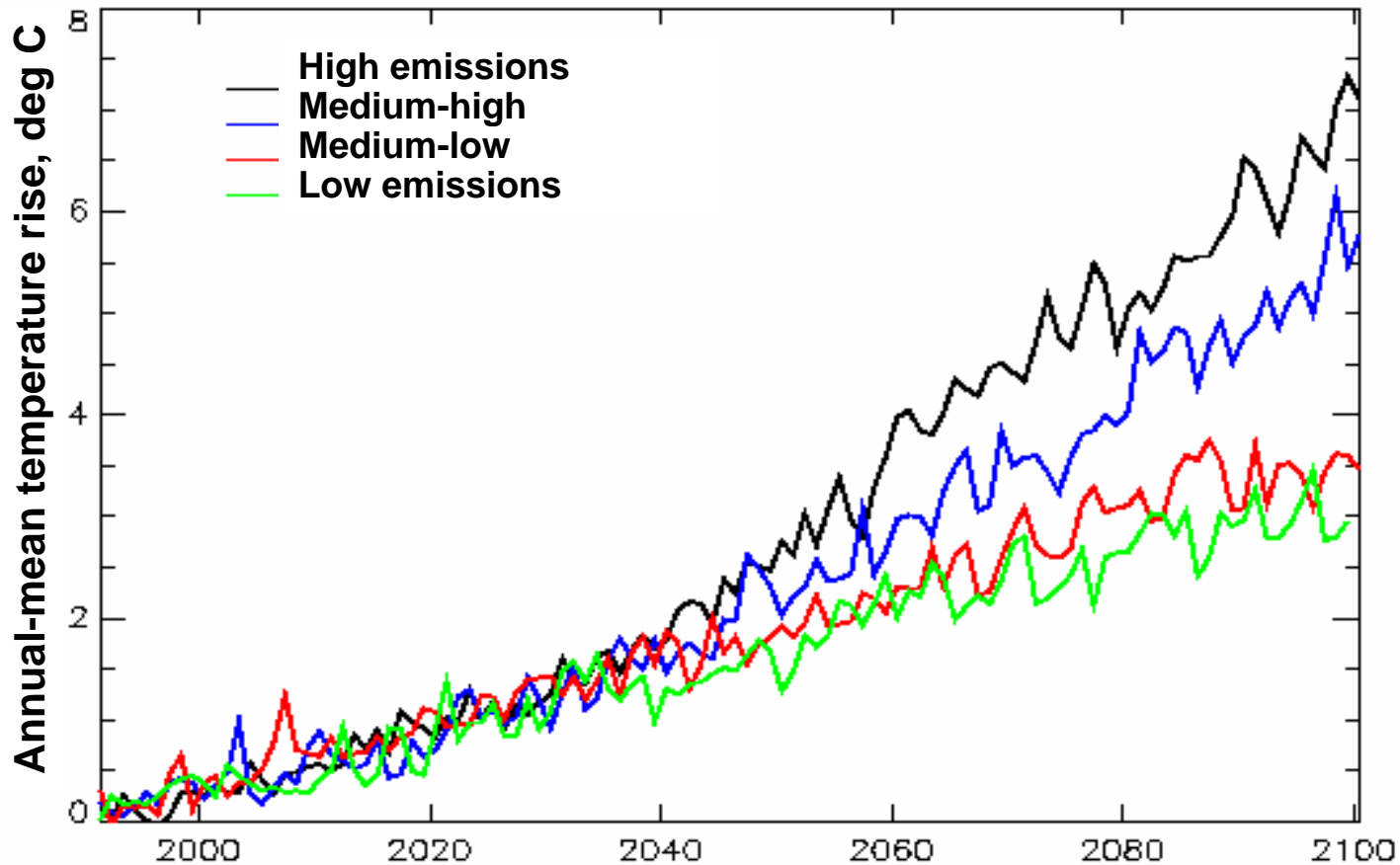
### Natural Factors cannot explain recent warming:



Recent warming can be simulated when manmade factors are included:



Global warming over next 40 years does not depend on emissions scenarios:





# What is Adaptation?

- Adaptation – coping with the unavoidable impacts of climate change

*“Adaptation is the only means to reduce the unavoidable costs of climate change over the next few decades” (Stern Review 2006)*



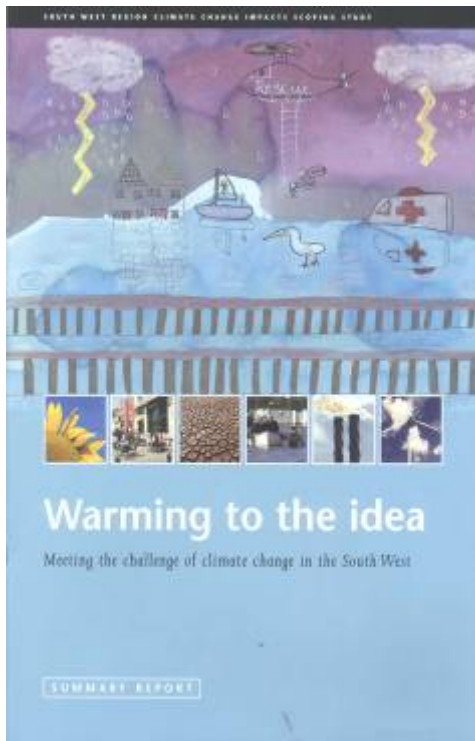


# Regional Response -SWCCIP

- SWCCIP Mission:

*“To investigate, inform and advise on the environmental, social and economic impacts of climate change in SW England, and develop and promote sustainable adaptation responses”*

- Established 2001 – partnership between key regional stakeholders
- Emphasis on impacts and adaptation
- 2003 – ‘Warming to the Idea’ SW climate change impacts scoping study



The SW climate change study set out to:

- Describe climate change scenarios for the SW
- Identify the likely impacts of such change
- Suggest actions needed to respond to impacts.

[www.oursouthwest.com/climate](http://www.oursouthwest.com/climate)



# Key Climate Change Impacts

- Hotter, drier summers: 3.5°C warmer by 2050s; 5-30% drier
- Wetter, warmer winters - 5-20% wetter by the 2050s
- More extreme events
- Rising sea levels – 80cm by the 2080s
- Warmer sea temperatures



# SWCCIP Sector Groups

## Agriculture



## Biodiversity



## Housing & Construction



# SWCCIP Sector Groups

Local Government



Tourism



Utilities & Business





# SWCCIP 2008-2011 Business Plan Objectives

1. Raise awareness and develop guidance on impacts and adaptation in additional sectors using latest scenarios and tools
2. Roll out the evidence of good practice in climate change adaptation to all key sectors
3. Review effectiveness of practical adaptation responses in priority sectors to promote widespread adaptive action
4. Support and inform implementation of adaptation policies in regional strategies and plans

# Public Health – Beneficial Effects

- **Milder Winters**
- 20,000-50,000 excess deaths in winter
- Seasonal excess of deaths highest in Europe
- 7,070,000 fewer cold related admissions
- **Increased exposure to UV**
- Vitamin D protective  
e.g. rickets, cancer, multiple sclerosis



# Public Health – Beneficial Effects

## Increased physical recreation

- Increased fitness
- Reduced obesity
- Reduced CHD



- **e.g. Benefits of cycling**
- A 10% shift from cars to cycling and walking could save 100 deaths and 1,000 hospital admissions in London each year.



# Public Health – Beneficial Impacts

- Five-a-day – greater choice of fruit and vegetables
- 20% cancer/CHD reduction





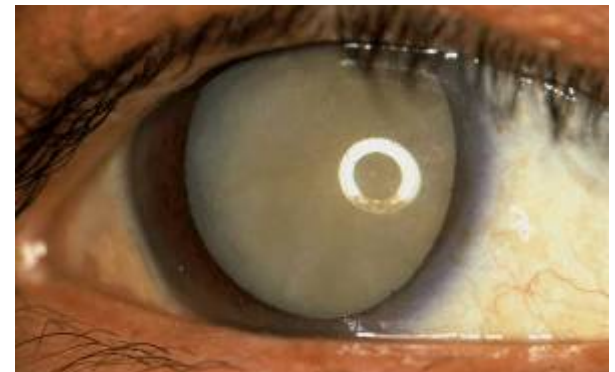
# Public Health – Detrimental Effects

## Increased Heat related deaths

- Hot weather increase daily mortality
- Heat associated with air pollution

## Over exposure to UV

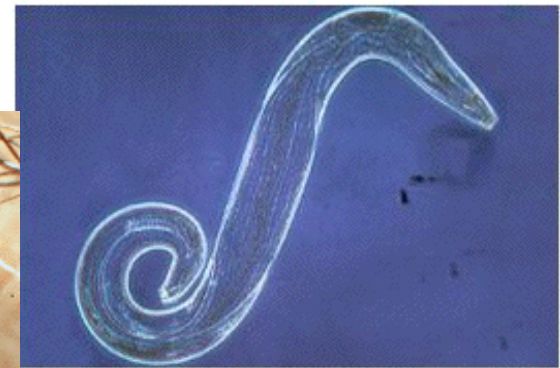
- Increased incidence of cataracts
- Skin cancers





# Public Health – Detrimental Effects

- Food Poisoning
  - Temperature rise °C  
+1  
+2  
+3
  - Infectious Diseases
  - Malaria
  - Tick borne disease
  - Water borne disease
- |    | Increased cases |
|----|-----------------|
| +1 | 4,000           |
| +2 | 9,000           |
| +3 | 14,000          |



# Public Health - Detrimental Effects

- Health Risks from Severe Conditions

- Road traffic accidents



- Being blown over



- Building collapse





# The Costs of (In)Action:

- “ Adaptation actions should be integrated into development policy and planning at every level. ... **ignoring climate change is not a viable option** – inaction will be far more costly than adaptation” (Stern Review, 2006)



# What you can do

***“If you think you’re too small to make a difference, try going to bed with a mosquito”***

- Find out more: [www.oursouthwest.com/climate](http://www.oursouthwest.com/climate)
- Raise awareness and plan for future changes
- Get involved! Public Health Sector Group?

[alex.webb@environment-agency.gov.uk](mailto:alex.webb@environment-agency.gov.uk)



## Conclusions:

- Climate change is a “now” issue
- (In)Action has long-term implications
- Climate change requires adaptation and mitigation