



Chartered  
Institute of  
Environmental  
Health



al

# **White Paper Consultation Workshop “Healthy Lives, Healthy People: Our Strategy for Public Health in England”**

**Mike Studden, Hon Secretary  
South West Regional Management Board**



# Drivers for Change (Wanless Revisited?)

“The emphasis we put on protecting from risk and treating illness, is not matched by the emphasis we put on preventing illness in the first place.

Recognising the additional demands facing the NHS in the coming decades – an increasing and ageing population, costly advances in treatments and rising expectations – we simply can't go on like this.

To have a fighting chance of meeting new demand in the years ahead, we have to get to grips with the real drivers of demand on our NHS now”.

*'A new approach to public health'* , Andrew Lansley, Health Secretary,  
UK Faculty of Public Health Conference, 7 July 2010



Chartered  
Institute of  
Environmental  
Health

# A New Approach to Public Health

“But, it’s clear that we have to find a new approach – to think new thoughts. We need a paradigm shift.

The reforms we are bringing in will empower you – the professionals – to commission services that work – to apply the best technology and the best new insights of social psychology and behavioural economics to achieve real improvements in public health.”

*'A new approach to public health'*, Andrew Lansley, Health Secretary,  
UK Faculty of Public Health Conference, 7 July 2010



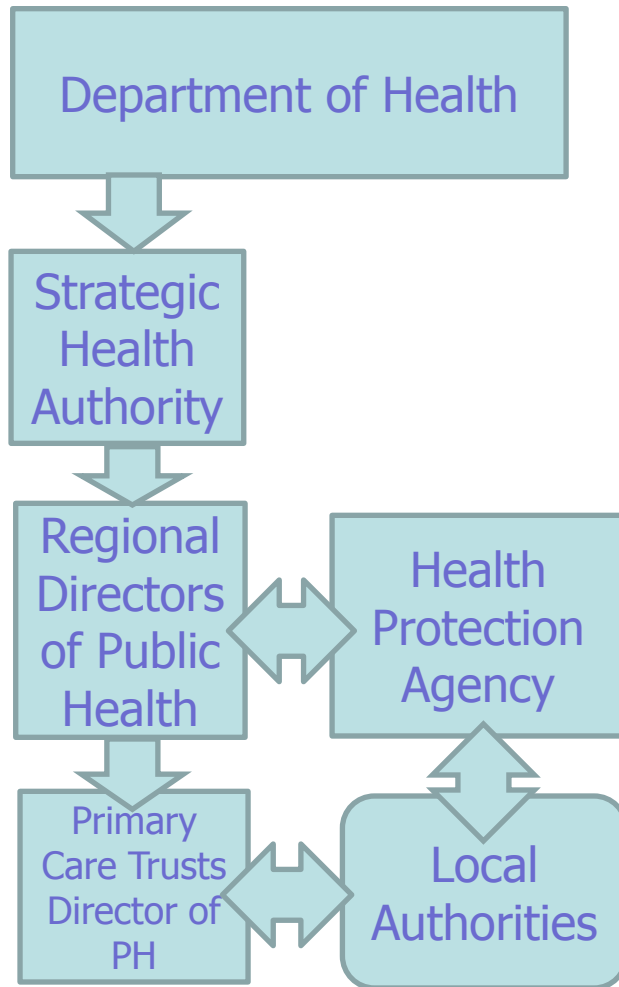
# A National Public Health Service

## ***PROPOSALS July 2010***

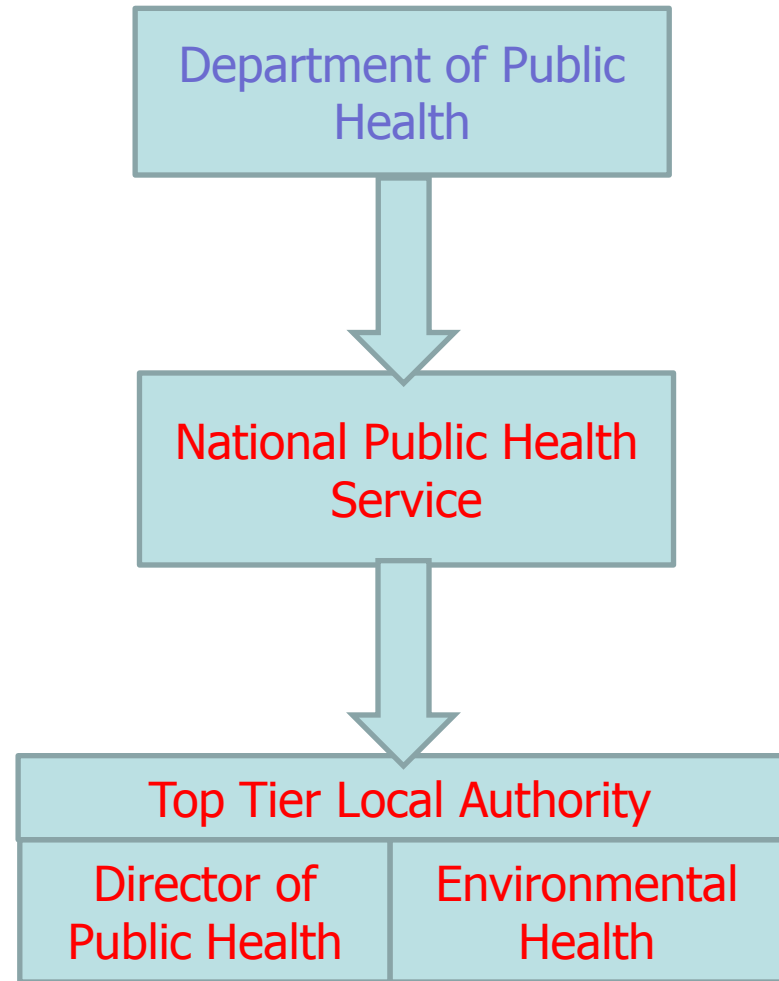
- Secretary of State for Public Health – *Anne Milton*
- Cabinet Sub-Committee on Public Health - ??
- New Public Health Service – *Public Health England*
- National cross-government Public Health Strategy - *Healthy lives, healthy people: our health and wellbeing*
- Strengthening the role of local government in improving public health - *Healthy lives, healthy people: consultation on the funding and commissioning routes for public health*



# A National Public Health Service



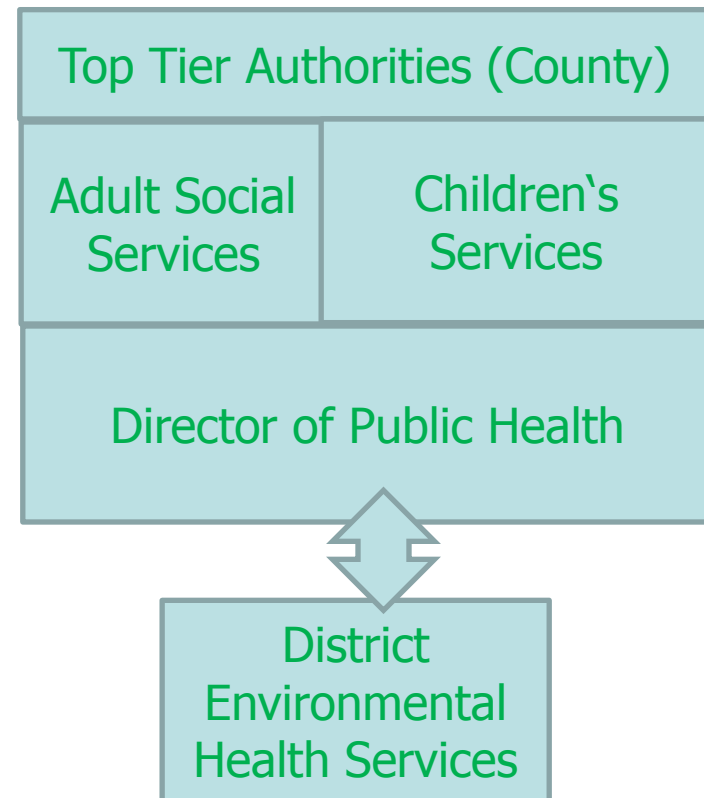
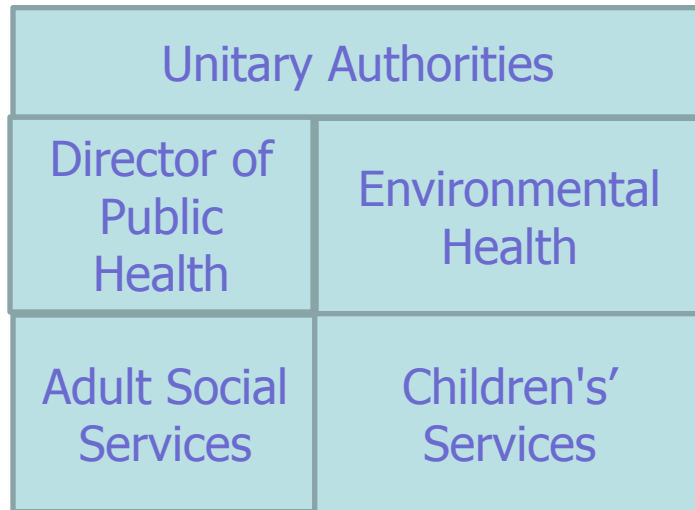
**EXISTING**



**PROPOSED**



# Local Authority Public Health Service





Chartered  
Institute of  
Environmental  
Health

# Public Health White Paper Consultations

## ***Current White Papers:***

### ***Equity and excellence: Liberating the NHS***

page 4, para. 6p;

page 5, para.8.

[http://www.dh.gov.uk/prod\\_consum\\_dh/groups/dh\\_digitalassets/@dh/@en/@ps/documents/digitalasset/dh\\_117794.pdf](http://www.dh.gov.uk/prod_consum_dh/groups/dh_digitalassets/@dh/@en/@ps/documents/digitalasset/dh_117794.pdf)

### ***Liberating the NHS: Local democratic legitimacy in health***

page 14, para.51.

[http://www.dh.gov.uk/prod\\_consum\\_dh/groups/dh\\_digitalassets/@dh/@en/documents/digitalasset/dh\\_117721.pdf](http://www.dh.gov.uk/prod_consum_dh/groups/dh_digitalassets/@dh/@en/documents/digitalasset/dh_117721.pdf)

### ***Liberating the NHS: Commissioning for patients***

page 2, para 1.9 LAs to lead JSNA;

page 5, para 1.20 partnerships;

page 7, 2.6 consortia to work with LAs on public health;

page 10, para 2.20 LA Wellbeing Boards.

[http://www.dh.gov.uk/dr\\_consum\\_dh/groups/dh\\_digitalassets/@dh/@en/documents/digitalasset/dh\\_117705.pdf](http://www.dh.gov.uk/dr_consum_dh/groups/dh_digitalassets/@dh/@en/documents/digitalasset/dh_117705.pdf)



Chartered  
Institute of  
Environmental  
Health

# Principles of Public Health Service

## *Equity and excellence: Liberating the NHS*

### **Autonomy, accountability and democratic legitimacy**

To strengthen democratic legitimacy at local level, local authorities will promote the joining up of local NHS services, social care and health improvement.

**The debate on health should no longer be about structures and processes, but about priorities and progress in health improvement for all.**



# Delivering Public Health Services

## *Liberating the NHS: Local democratic legitimacy in health*

### **Local authority leadership for health improvement**

In future, local authorities will have a stronger influence on the health outcomes of their local area. When PCTs cease to exist we intend to transfer responsibility and funding for local health improvement activity to local authorities.

Embedding leadership for local health improvement activity within local authorities builds upon the existing success of the many joint Director of Public Health appointments between local authorities and PCTs.

It is intended to unlock synergies with the wider role of local authorities in tackling the determinants of ill health and health inequalities.



Chartered  
Institute of  
Environmental  
Health

# Commissioning Public Health Services

## *Liberating the NHS: Commissioning for patients*

Local authorities will **lead the statutory joint strategic needs assessment**, which will inform the commissioning of health and care services and promote integration and partnership across areas, including through **joined up commissioning plans across the NHS, social care and public health**.

They will **support joint commissioning and pooled budget arrangements**, where parties agree this makes sense, and will undertake a scrutiny role in relation to major service redesign.

One option for doing this is through the **creation of statutory health and wellbeing boards within local authorities**.



# Commissioning Public Health Services

## *Liberating the NHS: Commissioning for patients*

### **Establishment of GP consortia**

GP practices to form consortia and arrangements for authorisation by the NHS Commissioning Board

Consortia and the NHS Commissioning Board will work with patients and the public, with **local government**, and with other health and care professionals **to secure more patient-centred and integrated delivery of care**

Consortia will have a **duty to** promote equalities and to **work in partnership with local authorities**, for instance **in relation to** health and adult social care, early years services and **public health**.



Chartered  
Institute of  
Environmental  
Health

# Joint Action for Public Health

## *Liberating the NHS: Commissioning for patients*

The proposed new local authority health and wellbeing boards would enable consortia, alongside other partners, to contribute to effective joint action to promote the health and wellbeing of local communities, including combined action on health improvement



# A National Public Health Service

## *Challenges*

- Service delivery models
- Positioning EHPs
- Engaging with new structures
  - Health and Wellbeing Boards
  - GP Commissioning Groups



# A National Public Health Service

## Service delivery models

- Joint Public Health England/ LA appointed Directors of Public Health
- Ring fenced “public health” budgets for LAs
- Local autonomy/ evidence based intervention
- Population level intervention v. individual service?
- Northern Ireland and US two tier models?



# A National Public Health Service

## *Positioning EHPs*

- Leadership
- Advocacy
- Capacity building
- New skills (JSNA)
- Structures and service delivery models



Chartered  
Institute of  
Environmental  
Health

# **A National Public Health Service**

## **THE NEW MISSION FOR EH**

**REDUCING THE BURDEN OF DISEASE  
PREVENTING ILL HEALTH  
REDUCING HEALTH INEQUALITIES**



# A National Public Health Service

## *Engaging with new structures*

- Health and Wellbeing Boards – local empowerment for local solutions/ statutory power to ensure “wellbeing”
- GP Commissioning Groups – power of the purse/ needs assessment for preventative initiatives v. historical curative spend



# A National Public Health Service

## *What can public health bring to environmental health?*

- Evidence based approach to intervention (Joint Strategic Needs Assessment)
- Ring fenced funding (albeit for wider public health responsibilities)
- Statutory role
- Direct links to National Public Health Service



# A National Public Health Service

## ***Are there any obvious gaps in the "new model"?***

- Strategic focus for environmental health
- Interface between population and individual health roles
- Local v national priorities
- Recognition of environmental health contribution to public health
- Integration into public health professional training and registration (new career paths)



# A National Public Health Service

## Consultation on a New National Public Health Service for England

### *ISSUES*

Is environmental health public health?

Do environmental health functions fit in the “new” public health?

What can environmental health professionals bring to public health?

What can public health bring to environmental health?

Are there any obvious gaps in the “new model”?

# A National Public Health Service

## ***Is environmental health public health?***

The official definition of public health is:

"the science and art of preventing disease, prolonging life, and promoting health through the organised efforts of society"

*Public Health in England, Sir Donald Acheson, 1988*



# A National Public Health Service

## *Who works in public health?*

People from a range of disciplines and at all levels of seniority make up the public health workforce.

Professionals who spend a major part, or all of their time, in public health practice include .....  
environmental health officers and those who use research, information, public health science or health promotion skills in specific public health fields.

*Public health in England*, Chief Medical Officer, Department of Health, June 2003

[http://webarchive.nationalarchives.gov.uk/+/www.dh.gov.uk/en/Aboutus/MinistersandDepartmentLeaders/ChiefMedicalOfficer/Features/FeaturesArchive/Browsable/DH\\_5017813](http://webarchive.nationalarchives.gov.uk/+/www.dh.gov.uk/en/Aboutus/MinistersandDepartmentLeaders/ChiefMedicalOfficer/Features/FeaturesArchive/Browsable/DH_5017813)



Chartered  
Institute of  
Environmental  
Health

# A National Public Health Service

## *What can environmental health professionals bring to public health?*

- Local engagement and community awareness
- Commitment to improve public health
- 170 years of experience
- Professional expertise
- Partnership working expertise
- Local accountability



# A National Public Health Service

## *What can public health bring to environmental health?*

- Evidence based approach to intervention (Joint Strategic Needs Assessment)
- Ring fenced funding (albeit for wider public health responsibilities)
- Statutory role
- Direct links to Public Health England



# A National Public Health Service

## *Are there any obvious gaps in the "new model"?*

- Strategic focus for environmental health
- Interface between population and individual health roles
- Local v national priorities
- Recognition of environmental health contribution to public health
- Integration into public health professional training and registration (new career paths)



# Thinking Nationally Acting Locally

## Action for Environmental Health - Leadership

### National:

- Environmental (Public) Health Strategy
- Advocacy (Engaging DH, PHE, BMA GP Group and Association of Directors of Public Health)
- Engagement with Local Government Association (Service Delivery Models)

### Local:

- Advocacy (Engaging Health & Wellbeing Boards, GP Commissioning Groups, Directors of Public Health and CIEH Members already in PH)
- Engaging CIEH Members (Local Focus Groups)



Chartered  
Institute of  
Environmental  
Health

# Thinking Nationally Acting Locally

The case for a prominent  
environmental health role  
in the new Public Health  
Service for England

Published October 2010

Briefing for Members of Parliament  
Second Reading Debate Monday 31  
January 2011  
Health & Social Care Bill

Published January 2011

Co-creating a response to Healthy Lives, Healthy People  
Workshop with BMA, FPH, UKPHA, RCN, ADPOHO and CIEH

London 11 October 2010

CIEH Public Health White Paper Consultation Workshops

Nationally January/ February 2011



# Thinking Nationally Acting Locally

## **Action for Environmental Health – Individual Capability**

- New Skills Building
  - Joint Strategic Needs Assessment
  - Risk Prioritisation
  - Evidence Based Intervention
  - Systematic Review
  - Population Level Epidemiology
- Leadership Skills
- Professional Doctorate?
- Public Health Training Scheme
- Faculty of Public Health Registration



Chartered  
Institute of  
Environmental  
Health

# Thinking Nationally Acting Locally

## **Action for Environmental Health – Capacity Building**

- Research and Development (Scully Report on Public Health Professional Regulation)
- Publications (Journal of EH Research!)
- Core Curriculum Review?

# Current Public Health White Paper Consultations

***Healthy Lives, Healthy People: Transparency in Outcomes Proposals for a Public Health Outcomes Framework*** (Published: 30 November 2010)

**Healthy lives, healthy people: our health and wellbeing**  
(Published: 30 November 2010)

**Healthy lives, healthy people: consultation on the funding and commissioning routes for public health** (Published: 21 December 2010)

**Healthy Lives, Healthy People: transparency in outcomes - proposals for a public health outcomes framework** (Published: 20 December 2010)

**Review of public health professional regulation** (Published: 30 November 2010)

Find consultation documents at: [www.consultations.dh.gov.uk/healthy-people](http://www.consultations.dh.gov.uk/healthy-people)

Respond to consultations at: [publichealthengland@dh.gsi.gov.uk](mailto:publichealthengland@dh.gsi.gov.uk)

***Respond by 31 March 2011***

# Towards a Bright New Future?

Chartered  
Institute of  
Environmental  
Health

