

Desperately seeking SPOSH: Mapping Unacceptable Intake

An LQM/CIEH workshop at the University of Nottingham

Date and venue

This two-day workshop will be held on 8 & 9th July 2010 at the University of Nottingham. The workshop will run from 10am Day 1 through to 4:30pm on Day 2. Full joining instructions will be sent to each delegate prior to the course.

Workshop Content

Under Part 2A, a significant possibility of significant harm to human health arises from an 'unacceptable intake' of a contaminant. Toxicology has focused on defining intakes that are tolerable or pose a minimal risk. Toxicological information must also underpin the evaluation of high or unacceptable levels of risk to human health from contamination.

Recent guidance recognises the need to move away from a single datum to define the point of departure towards using the entire dose-response dataset for a contaminant. The contaminated land community has focused on how far over a Tolerable Daily Intake or Index Dose does an exposure have to be for it to be unacceptable. Such an approach ignores information above the point of departure available for each contaminant from toxicological and epidemiological studies.

This workshop will analyse the toxicological reviews underpinning the development of the 'new' Environment Agency SGVs and the 2nd edition LQM/CIEH GAC to develop the electronic "LQM/CIEH Roadmap of Unacceptable Intake". The generic analysis can be applied to any substance.

Participants are not required to carry out any work prior to attending the workshop but a familiarity with Environment Agency guidance in the form of SR2 will be presumed.

Working under expert guidance, triplets of delegates will each develop dose-response road maps for three substances that capture the full extent of toxicological information reviewed to inform the SGV/ GAC values. The final number of substances 'mapped' in this way will depend on how many delegates attend the workshop.

Outcomes will be peer reviewed and published to help the contaminated land community better evaluate risks to human health under Part 2A or similar regimes. This will accompany updated guidance on determination being prepared by CIEH.

How will you benefit from this workshop?

By the end of the workshop you should be better able to:

- Appreciate the limitations of exceedances of the TDI and Index Dose for identifying unacceptable intake
- Apply the full range of toxicological information about a contaminant to risk evaluation
- Identify when substance specific toxicological expertise is required to inform a risk evaluation

Delegates receive a CPD **Certificate of Attendance** and a copy of the "LQM/CIEH Roadmap of Unacceptable Intake".

Who should attend?

Those working on sites suspected of posing a significant possibility of significant harm to human health:

- Local authority contaminated land officers
- Contaminated land consultants
- Land owners/ estate managers

Facilitators

The workshop will be facilitated by LQM staff renowned for their experience and knowledge - as well as their enthusiasm to improve the way land contamination issues are tackled.

Cost

Private Sector rate: £500 (excluding VAT)

Public Sector Rate: £250 (excluding VAT)

VAT is chargeable at the prevailing rate.

** Applies to Local Authority, Health Authority, Environment Agency and SEPA, Health Protection Agency etc.*

Discounts: We offer a 5% discount for 3 delegates; 10% discount for 4 delegates and 15% discount for 5 or more delegates. Discounts apply only where full (private sector) rates are paid and when payment of delegate fees is undertaken in one transaction (e.g. one invoice issued).

Please note: Fees **do not include** overnight accommodation, meals or refreshments. Delegates are welcome to use on site catering outlets and local hotel/ B&B accommodation.

Payment must be received before commencement of the workshop. Cancellations will only be accepted up to 2 weeks before the workshop runs and an administration charge of 25% of the fees will apply. Personnel may be substituted at any time.

LQM reserve the right to cancel a workshop; at least 7 days notice will be given. LQM cannot accept any liability for costs incurred as a result of such cancellation (e.g. train tickets) although of course any fees already paid for the workshop would be returned in full.

All workshops are undertaken in accordance with our terms and conditions. These can be viewed at www.lqm.co.uk

LQM/CIEH GAC Publication (2nd Edition)

Delegates will need access to the 2nd Edition LQM/CIEH GAC publication, published in July 2009, which presents generic assessment criteria (GAC) for 82 substances.

The usual price of the 2nd Edition is £195.00 (inc P&P). Each Delegate on this workshop can **purchase ONE copy** at the same time as booking on the workshop for collection at the workshop for **only £75.00**. (We can post this to you for an additional p&p charge of £10.00). Alternatively you may bring your own copy to the workshop. A limited number of copies will be available for delegates to use during the workshop.

Booking

To book a place(s) on this workshop, please complete and return the booking form at the back of this brochure. Please note that our QA system requires all bookings on an official LQM booking form and that booking demonstrates acceptance of our terms and conditions and that no other terms and conditions apply.

For more information

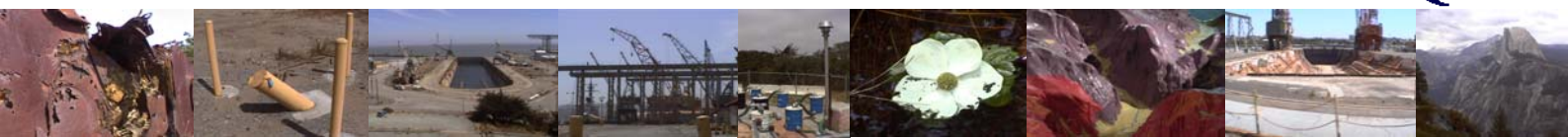
More information about this workshop and our other courses is available on our website at www.lqm.co.uk/training.

Alternatively, contact us at:

Land Quality Management Ltd, Unit 8, Beeston Business Centre, Nottingham, NG9 2ND.

Tel: 0115 951 8030; **Fax:** 0115 967 8798

E-mail: administrator@lqm.co.uk;



Publications available from LQM Press

Contaminated Land Ready Reference

For all professionals working with contaminated sites who need to have up-to-date key data at their fingertips. The Ready Reference is designed to provide an easy to use source of key technical information about the investigation, characterization and remediation of contaminated land.

This book is presented in a concise, tabular format. Each table addresses a specific topic and provides decision support by means of checklists, flow charts and option screening grids. Each table is also supported by full references to key documents.

The book is in loose-leaf format and updates will be issued to take account of the latest developments in legislation, guidance and technology. Release 2 incorporating the first series of updates was published in July 2007.

Usual Price: £129.00 (inc P&P); £29.00 for updates only (inc P&P)

Delegates on LQM courses can pre-purchase copies of the Ready Reference Guide at the reduced price of £100. Updates can be pre-purchased for £25.00. This reduced price applies only to pre-purchased copies collected during the workshop and does not apply to copies ordered after completion of the workshop when postage and packaging will be required. Copies can be reserved on the attached booking form. Payment must be received prior to the workshop.

LQM/CIEH GAC Publication (2nd Edition)

The 2nd Edition LQM/CIEH GAC publication, published in July 2009 presents generic assessment criteria (GAC) for over 80 substances.

Changes in UK technical guidance on human health risk assessment since the release of the 1st Edition in 2006 prompted the revision and expansion of the GAC publication. As with the widely accepted 1st Edition, this publication describes the outcome of a workshop, held in January 2009, which brought together a number of practitioners who sourced contaminant specific toxicological and physical chemical input data for over 80 substances.

The workshop resulted in the development of generic assessment criteria (GAC) for use in generic quantitative human health risk assessment.

The delegates were guided in their preparation and during the workshop by LQM staff, who have also subjected the workshop outputs to rigorous review and prepared them for publication.

The 2nd Edition LQM/CIEH GAC values were derived using the CLEA v1.04 risk assessment tool to be compliant with UK policy and guidance.

For further details on the publication please visit our website at www.lqm.co.uk.

2nd Edition Usual Price: £195.00 (inc P&P)

Each delegate on this workshop can pre purchase ONE copy of the LQM/CIEH GAC Publication 2nd Edition at the reduced price of £75.00 for collection at the workshop. This reduced price applies ONLY to copies ordered at the time of booking places on the workshop (ONE copy per delegate). Copies must be reserved on the attached booking form. Payment must be received prior to the workshop.

Chemical Analysis of Contaminated Land

This book is edited by K. Clive Thompson of Alcontrol Laboratories and Paul Nathanail of LQM and provides a one-stop reference for the analysis and delivery of contaminated land samples and subsequent presentation of the data. Problems of analysis and solutions are provided, along with a chapter on the new techniques of ecotoxicity measurement. This book is suitable for environmental consultants, analytical chemists, environmental chemists, laboratory managers, ecotoxicologists and environmental regulators.

Usual Price: £92.25 (inc P&P)

KeyCSM Conceptual Site Modelling Software

A conceptual site model (CSM) describes and depicts the environmental features of a site and its surrounding area and identifies the pollutant linkages. The CSM underpins the planning of each stage of site investigation and will drive the risk assessment.

Land Quality Management Ltd (LQM) worked with Keynetix Ltd to develop software to facilitate the rapid creation and updating of conceptual site models. Amongst its many capabilities, KeyCSM can be used to create detailed plans, cross sections, network diagrams and matrix diagrams to represent the sources, pathways and receptors associated with a potentially contaminated site. More information on KeyCSM can be found at www.keynetix.com/keycsm.

Usual Price: £450.00 (inc P&P)

Delegates on LQM courses can pre-purchase the KeyCSM Software at the reduced price of £400. To qualify for this discount, payment must have been received prior to the workshop and the software collected on the day of the workshop.

Ordering

Copies of these titles and several others can be ordered through LQM Press. Please see our website at www.lqm.co.uk/lqmpress/ for more details and ordering information.

However, delegates on LQM courses can pre purchase copies of selected titles at reduced rates for collection during the course by completing the attached workshop booking form. (see above for details).

For more information:

For more information on these and other titles available through LQM Press, please visit our website at www.lqm.co.uk or contact our Administrator at:

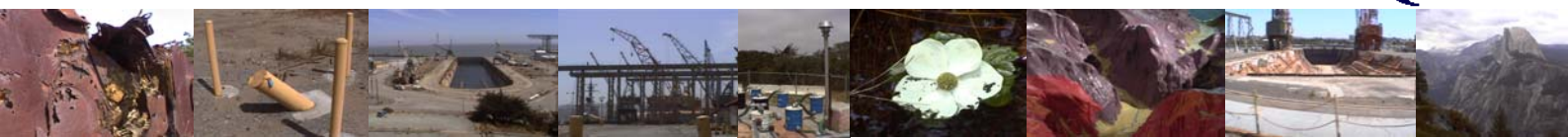
Land Quality Management Ltd, Unit 8, The Business Centre, Technology Drive, Beeston, Nottingham NG9 2ND

Tel: 0115 951 8030

Fax: 0115 967 8798

E-mail: administrator@lqm.co.uk

LQM
LQM



Please book places on “*Desperately seeking SPOSH*”: *Mapping Unacceptable Intake*

No of delegates	Rate	Delegate Fees	Company/Organisation and Address
	£500 or £250		
I will bring my own GAC publication (2nd Edition)		Yes / No	
I wish to borrow a GAC publication (2nd Edition)		Yes / No	
Collect at the workshop: Pre-purchase GAC publication (2nd Edition) @ £75.00 per copy			
Post to me before the workshop: Pre-purchase GAC publication (2nd Edition) @ £85.00 per copy			
Total (excl. VAT)			

Delegate Name(s)	Delegate(s) Email & Telephone No.	Any Special Requirements (eg dietary etc.)

I will be paying by credit card / please invoice me / cheque enclosed *(Delete as appropriate)*

Cheques should be payable to “Land Quality Management Ltd”, Unit 8, The Business Centre, Technology Drive, Beeston, Nottingham. NG9 2ND

Invoicing details (if applicable):		Credit card details (if applicable):	
Purchase Order No.		Card Number:	
Contact Name:		Expiry Date:	
Telephone:		Name on Card:	
Invoicing Address:		Card Billing Address:	

Sorry no American Express

Please note: 1. All courses are offered under LQM’s Terms & Conditions (see www.lqm.co.uk). 2. Payment must be received before commencement of the course. 3. Cancellations will be accepted up to 2 weeks before the event, an administration charge of 25% of the registration fees will apply. Personnel may be substituted at any time. 4. LQM reserve the right to cancel anevent; at least 7 days notice will be given. LQM cannot accept any liability for costs incurred as a result of such cancellation although all course fees will be returned in full.

For office use only	Acknowledgment sent:	Draft invoice sent:	Paid:
Date:			