



MINISTRY OF DEFENCE



MoD/Crown Copyright from www.defenceimages.mod.uk

Joining Forces The MOD Approach to Land Contamination.

Adam Spencer – Defence Estates.



DEFENCE ESTATES

Delivering Estate Solutions to Defence Needs

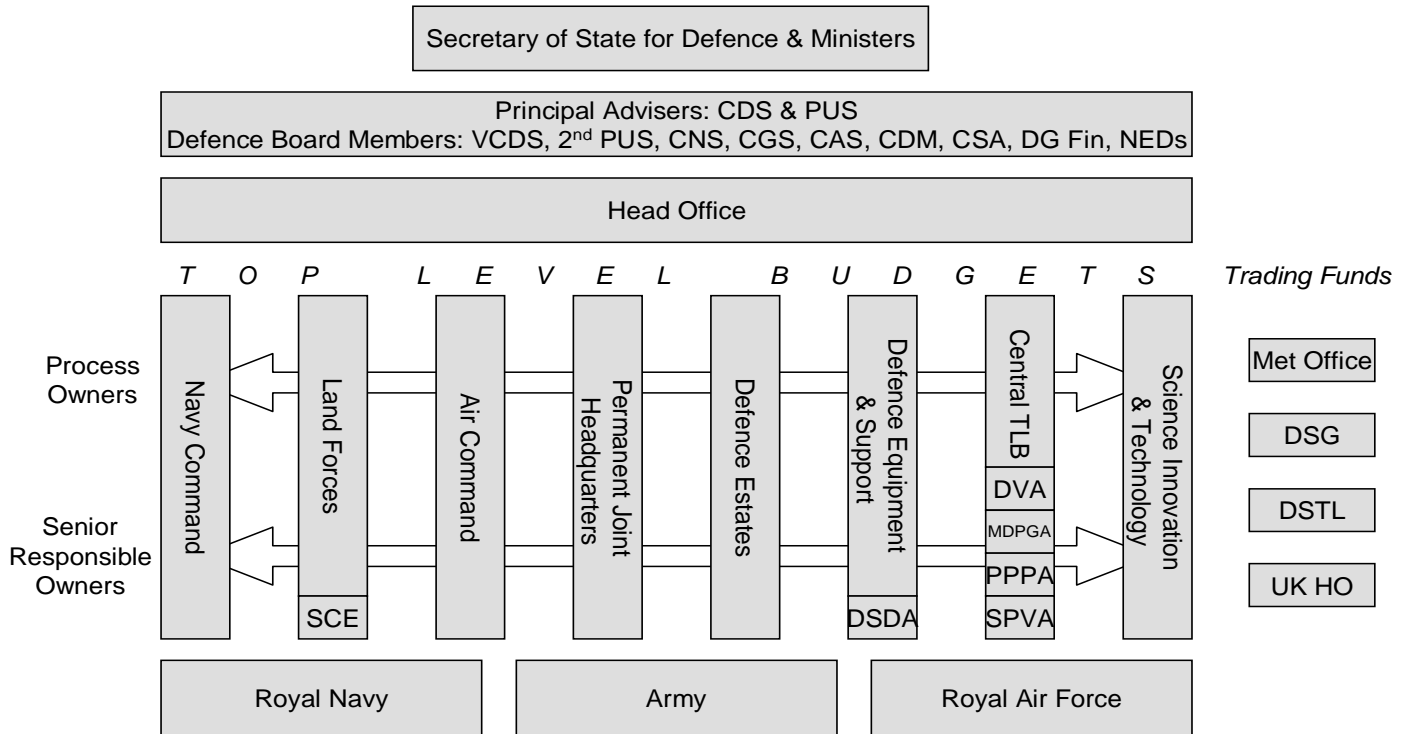
Content

- MOD Structure
- Environmental Liability Management Group
- The MOD Land Quality Program
- Reports
- Requests For Information
- ... and finally.
- Questions.



MOD Structure

Organisation of Defence



Defence Framework – How Defence Works

Environmental Liability Management Group

- **Part of Defence Estates Professional and Technical Services (Includes Ecology, Historic Buildings, Planning and Building Control.)**
- **Team of 11 Members various backgrounds including:
Local Authority , Consultancy and EA.**
- **Responsible for managing environmental liabilities through land quality assessment in MOD, not only UK wide.**
- **Has input into other environmental issues.**
- **Statutory Consultees on Guidance etc.**
- **Members on various C.L Groups and Committees**
- **Meets with EA at Policy level regarding sites and remediation and have a memorandum of understanding.**
- **Arrange and Review land assessments as subject matter experts.**

The MOD Land Quality Program

- MOD has ownership of approx. 1% of UK land mass, but historically up to 25%. There are not LQA's for all of this!
- Internal MOD Policy and Guidance is used, based on current guidance and legislation.
- Ongoing prioritisation exercise carried out by all TLB's in MOD for existing MOD estate.
- High priority (risk) sites moved forward for further assessment. This may include specific areas of sites and not the whole.
- If further assessment or investigation required ELM takes over task management.

The MOD Land Quality Program

- **Phase 0 LQA – Basic Risk Assessment and Prioritisation.**
Carried out by TLB.
- **Phase 1 LQA – Typical Desktop Study – Identifies risk, liabilities and requirement for potential Phase 2.**
- **Phase 2 LQA – Intrusive Works, if required, risk based and may be localised in scope.**
- **Phase 3 LQA – Options Appraisal**
- **Phase 4 – Further works as required.**

Reports

- **Recognised industry standard and agreed with EA as being compliant with Part IIA .**
Produced for 2 purposes:
- **Retained Estate to identify risks to existing estate. Report may be produced internally, or**
- **Disposal (sale) Estate reports produced by external 3rd Party consultants**
- **Reports remain the property of the requesting TLB, NOT ELM property, we are the custodians.**

Requests For Information

- **Go to the Head of Establishment.**

Will have ownership of any LQA report.

Responsible for Health Safety and Environment on site. May have further useful information regarding incidents etc.

Try to be specific with requests, enclose copies of 'Military Land' Layer from GIS and where enquiry relates to.

- **If request is for 'alienated' estate (that is estate no longer in MOD ownership or was requisitioned) go to DE Land Management Services (LMS)**

- **EA for specific questions or issues with regard to sites, as in statutory guidance.**

... and finally.

- **Go to the HoE and EA for assistance in the first instance.**

However:

- **Don't be afraid to give us a call if you need to.**
- **We are here to help.**

Questions?



Adam.Spencer@de.mod.uk

Defence Estates Sutton Coldfield.

Tel 0121 311 3773.