

Wellbeing of Future Generations: Opportunities for Public Health

Health & Sustainability Hub
Public Health Wales

What led to the Well-being of Future Generations (Wales) Act 2015

- Short term thinking, not thinking about the long term
- Working in policy and organisation silos
- Separate solutions to common problems
- Greater awareness of connections between issues (environment, economy, society)
- Needs of whole populations
- Long term trends and challenges



GIG
CYMRU
NHS
WALES

Iechyd Cyhoeddus
Cymru
Public Health
Wales

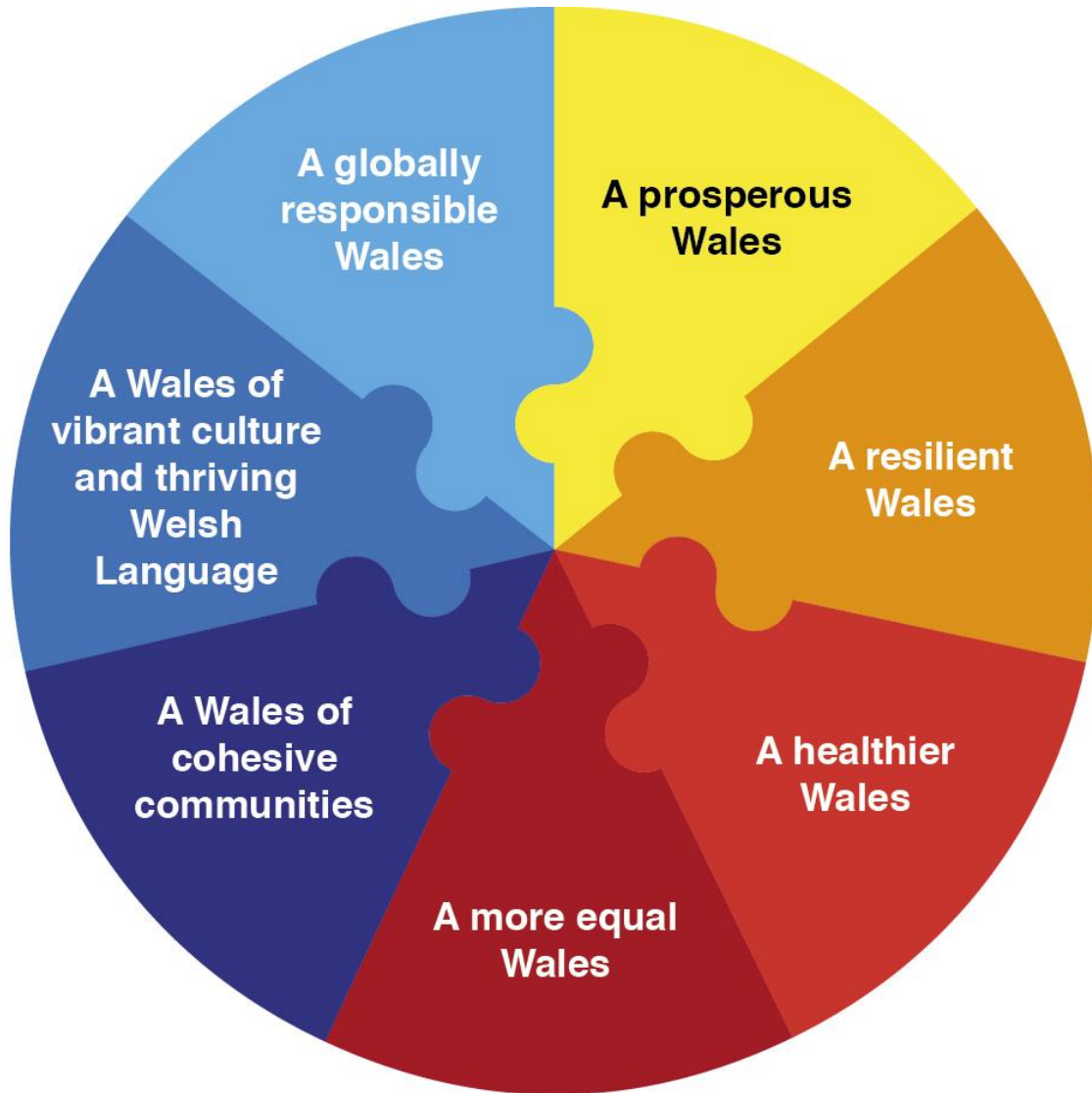
UN Sustainable Development Goals



GIG
CYMRU
NHS
WALES

Iechyd Cyhoeddus
Cymru
Public Health
Wales

7 Well-being Goals







**Economic, social,
environmental
and cultural
well-being of
Wales**



GIG
CYMRU
NHS
WALES

Iechyd Cyhoeddus
Cymru
Public Health
Wales

Ways of working sustainably

Long-term		We plan for the long-term
Prevention		This means we are able to spot challenges earlier and take preventative action
Integration		We realise that all things are inter-connected and so we plan and deliver in an integrated way
Collaboration		By taking an integrated approach, we realise the value of co-operating and collaborating with others
Involvement		This leads us to involve the people who use our services and the staff who deliver them

WELL-BEING GOALS
A sustainable Wales

A prosperous Wales

A resilient Wales

A healthier Wales

A more equal Wales

A Wales of cohesive communities

A Wales of vibrant culture and thriving Welsh language

A globally responsible Wales

PROGRESS

National Indicators and Milestones



▲ Duty: Each public body must carry out sustainable development ▲
This must include setting well-being objectives

WHO

Public Service Organisations:

- Welsh Government
- National Museum
- Arts Council
- Sports Wales
- National Library
- HEFCW
- Velindre NHS Trust
- Public Health Wales
- National Park Authorities



HOW

Sustainable Development Principle



Long-term



Integration



Collaboration



Involvement



Prevention

TRENDS

Future Trends Report



TRANSPARENCY

Better information



Statement



Annual reporting



Responding to the Commissioner

EXAMINATIONS

Auditor General for Wales



Examinations

SUPPORTING THE CHANGE

Future Generations
Commissioner for Wales



Long term



Advice



Review powers



Recommendations



Monitor

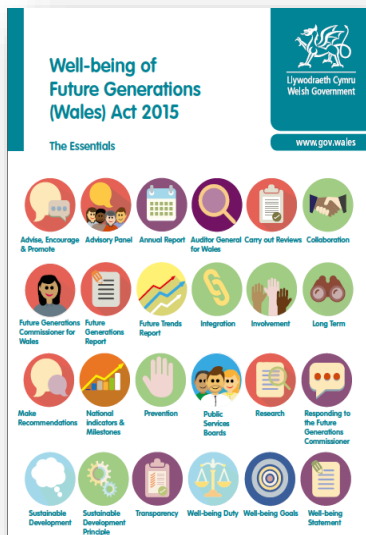


Future Generations Report



Advisory Panel

Where to learn more



[The Essentials guide](#)



['Megan's Life' animation](#)

www.publichealthwales.org/future-generations

Or contact the Health & Sustainability Hub: publichealth.sustainability@wales.nhs.uk



GIG
CYMRU
NHS
WALES

Iechyd Cyhoeddus
Cymru
Public Health
Wales

Recognising the EH contribution

HOW DOES ENVIRONMENTAL HEALTH CONTRIBUTE TO DELIVERY OF THE WELL-BEING GOALS?

A GLOBALLY RESPONSIBLE WALES

- Delivering interventions that tackle climate change
- Promoting and delivering sustainable development interventions and projects
- Sharing knowledge, skills and best practice with international partners

A WALES OF VIBRANT CULTURE AND THRIVING WELSH LANGUAGE

- Delivering services and information bilingually

A WALES OF COHESIVE COMMUNITIES

- Regenerating communities by improving housing
- Delivering area regeneration projects
- Promoting community integration

A MORE EQUAL WALES

- Delivering interventions and services targeted at deprived communities and individuals
- Designing and delivering bespoke interventions addressing individual and community needs

Chartered Institute of
Environmental Health
Sefydliad Siartredig
Iechyd yr Amgylchedd



A PROSPEROUS WALES

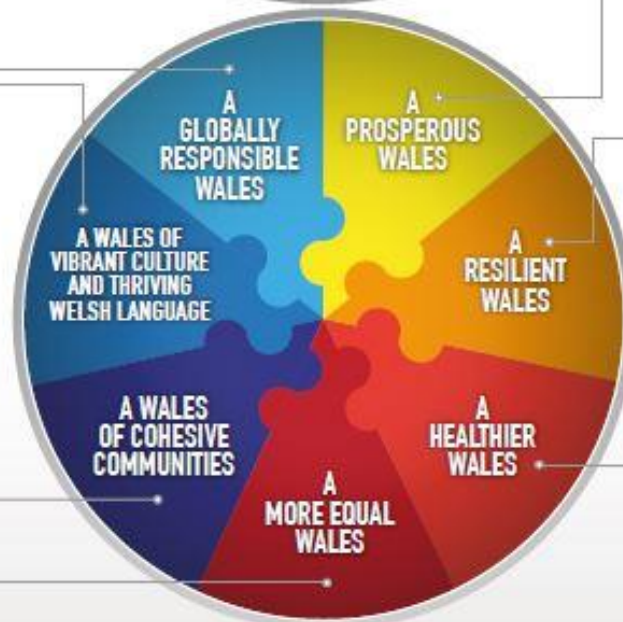
- Promoting good standards
- Providing advice and guidance and enhancing skills and knowledge
- Ensuring a level playing field for business
- Assisting rural diversification and innovative business development
- Supporting tourism and the night time economy

A RESILIENT WALES

- Maintaining business continuity
- Protecting communities and individuals from the impact of climate change
- Supporting business development and growth
- Supporting community development and growth

A HEALTHIER WALES

- Enforcing food hygiene and promoting food standards
- Preventing diseases of occupational exposure
- Mitigating the health impact of adverse lifestyle choices
- Reducing the likelihood of disease outbreaks
- Promoting health and wellbeing
- Ensuring healthy living and working conditions and environments



ENVIRONMENTAL HEALTH: UNSEEN, ESSENTIAL & COST EFFECTIVE

Key EH functions identified

- Promoting healthy lifestyles and environments
- Community integration and cohesion
- Targeting action to reduce inequalities
 - Housing and community regeneration
 - Food hygiene and standards
 - Protecting people from infections and diseases
 - Protecting people from environmental hazards
 - Climate change mitigation and adaptation
 - Occupational health and safety



GIG
CYMRU
NHS
WALES

Iechyd Cyhoeddus
Cymru
Public Health
Wales

Futures forecasting

OFG Commissioner said:

“Clear lack of capability and confidence in relation to looking at the long-term”

“need to build capacity to help understand forecasting, future trends and future generations’ needs”



GIG
CYMRU
NHS
WALES

Iechyd Cyhoeddus
Cymru
Public Health
Wales

Population changes

- By 2050, 65 yr old male life expectancy = 91 yr (compared with 83.2 currently)
- Older people: working age people ratio to rise
- Life expectancy rise outpace healthy life expectancy rise = public service pressures
- Older people will benefit economy (£291b vs projected welfare cost of £216b)
- No. households projects to increase by 15% (190,000) by 2036



GIG
CYMRU
NHS
WALES

Iechyd Cyhoeddus
Cymru
Public Health
Wales

Prosperous Wales

- Falling budgets in Wales
- Jobs at risk from automation
- Children entering primary school will work in jobs that do not exist right now
- BREXIT?
 - EU funding
 - food security
 - labour markets and employment



GIG
CYMRU
NHS
WALES

Iechyd Cyhoeddus
Cymru
Public Health
Wales

Resilient Wales

- Climate change risks will increase (flooding, drought, ecosystem damage, adverse public health impacts)
- More frequent extreme weather events
- Increasing mean temperatures, mean winter rainfall; falling summer rainfall
- Milder winters may reduce home heating costs, fuel poverty; warmer summers may encourage tourism, outdoor activities, crop yields, livestock farming

Healthier Wales

- Smoking rates falling
- Poor diet increasing
- No. adults with heart condition to rise
- No. adults with mental health disorder to rise
- No. older people with dementia to rise
- Social care costs to increase
- NHS spending to increase from £6.5b (15/16) to £10.4b (30/31)

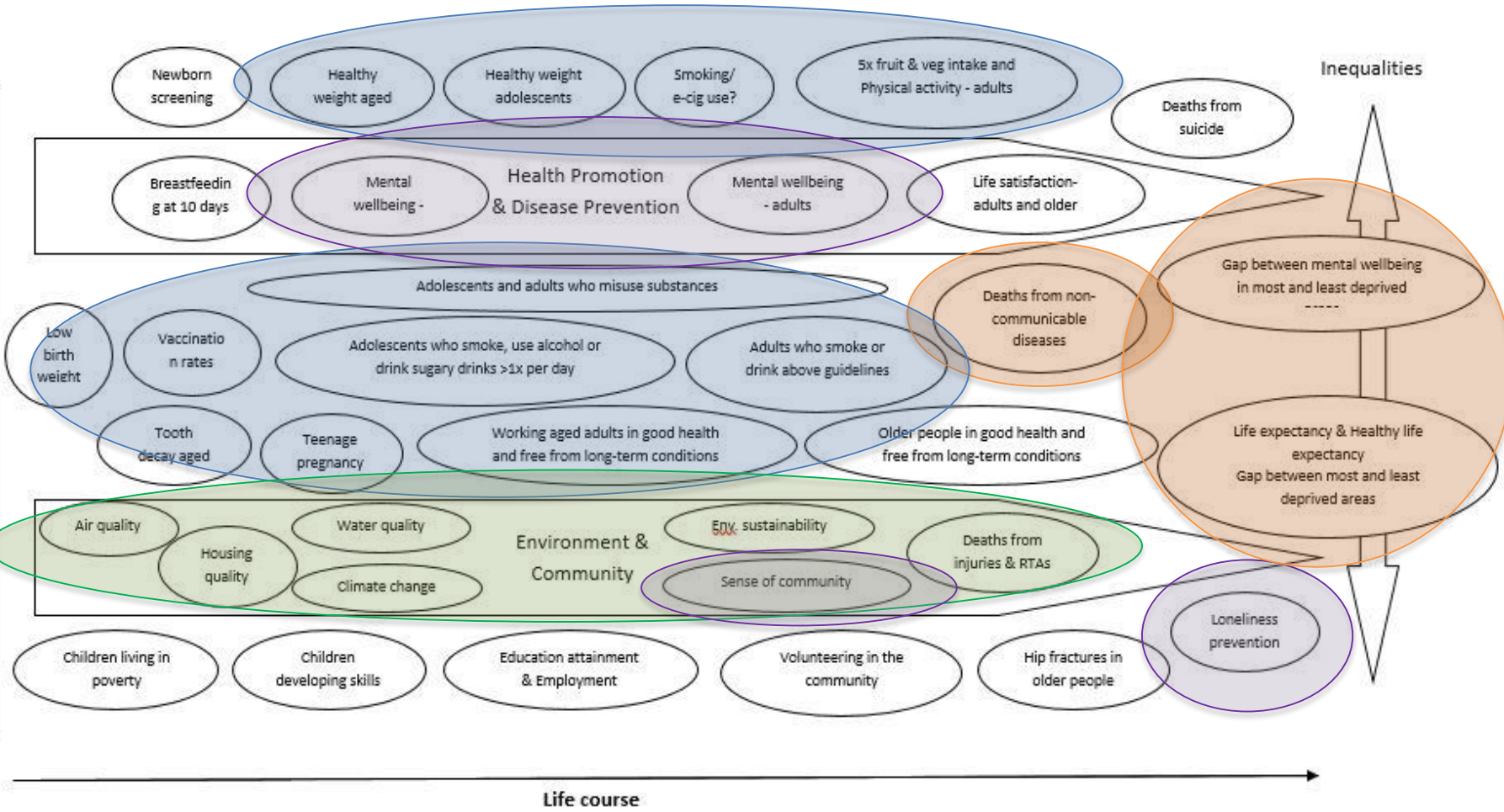


GIG
CYMRU
NHS
WALES

Iechyd Cyhoeddus
Cymru
Public Health
Wales

Wellbeing Assessments

Map assets – including health, community & environmental assets.
Apply assets based approach and gap analysis to planning moving



Recognising the EH contribution

HOW DOES ENVIRONMENTAL HEALTH CONTRIBUTE TO DELIVERY OF THE WELL-BEING GOALS?

A GLOBALLY RESPONSIBLE WALES

- Delivering interventions that tackle climate change
- Promoting and delivering sustainable development interventions and projects
- Sharing knowledge, skills and best practice with international partners

A WALES OF VIBRANT CULTURE AND THRIVING WELSH LANGUAGE

- Delivering services and information bilingually

A WALES OF COHESIVE COMMUNITIES

- Regenerating communities by improving housing
- Delivering area regeneration projects
- Promoting community integration

A MORE EQUAL WALES

- Delivering interventions and services targeted at deprived communities and individuals
- Designing and delivering bespoke interventions addressing individual and community needs

Chartered Institute of
Environmental Health
Sefydliad Siartredig
Iechyd yr Amgylchedd



A PROSPEROUS WALES

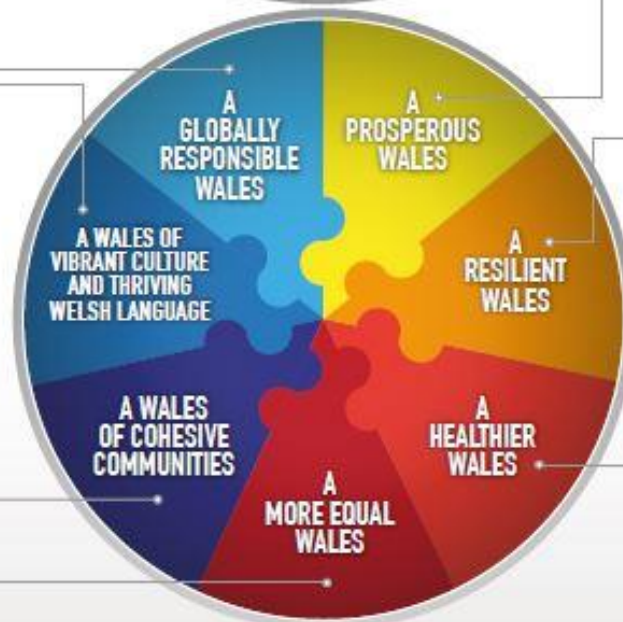
- Promoting good standards
- Providing advice and guidance and enhancing skills and knowledge
- Ensuring a level playing field for business
- Assisting rural diversification and innovative business development
- Supporting tourism and the night time economy

A RESILIENT WALES

- Maintaining business continuity
- Protecting communities and individuals from the impact of climate change
- Supporting business development and growth
- Supporting community development and growth

A HEALTHIER WALES

- Enforcing food hygiene and promoting food standards
- Preventing diseases of occupational exposure
- Mitigating the health impact of adverse lifestyle choices
- Reducing the likelihood of disease outbreaks
- Promoting health and wellbeing
- Ensuring healthy living and working conditions and environments



ENVIRONMENTAL HEALTH: UNSEEN, ESSENTIAL & COST EFFECTIVE

Opportunities

Role

- Health protection
(comm./non-comm. disease)
- Health improvement
- Community regeneration/cohesion
- Inequalities
- Profile - unique expert role

Process


- PSB influence - advocacy
- PSB engagement
- Policy influence
- Strength in consistency
- Effective intervention
(legislation/innovation)
- Sharing best practice



GIG
CYMRU
NHS
WALES

Iechyd Cyhoeddus
Cymru
Public Health
Wales

Air quality



Local air quality management in Wales

Policy guidance

June 2017

CC BY 4.0 © Crown copyright 2017. W622159. Digital ISBN: 978-1-4754-9792-4. Mwy o ddiagram yna hefyd ar gart yn Gymraeg / This document is also available in Welsh.

Contents lists available at ScienceDirect

Environmental Science and Policy

ELSEVIER journal homepage: www.elsevier.com/locate/envsci

Enhancing *Local Air Quality Management* to maximise public health integration, collaboration and impact in Wales, UK: A Delphi study

H. Brunt^{a,b,*}, J. Barnes^a, J.W.S. Longhurst^a, G. Scally^c, E. Hayes^b

* Air Quality Management Resource Centre, University of the West of England, Bristol, UK
^b Environmental Public Health Team, Public Health Wales, Cardiff, UK
^c WHO Collaborating Centre for Healthy Urban Environments, University of the West of England, Bristol, UK

ARTICLE INFO

Keywords:
Local Air Quality Management
Air pollution
Public health
Integration
Collaboration
Delphi

ABSTRACT

Background: Outdoor air pollution is a significant public health problem. The UK Local Air Quality Management (LAQM) regime is intended to protect public health through a prescribed process of assessment and collaborative action. Despite its intention and underpinning principles, public health bodies and specialists do not interact with or support LAQM as much as they could or should. This study aimed to explore and understand this disconnect, to inform action that can resolve problems and maximise public health integration, collaboration and impact in this important public health work.

Methods: The Delphi technique was used to elicit multiple viewpoints from a range of experts on this complex problem in Wales, UK. Over three iterative feedback-interspersed survey rounds, 86 expert panellists generated opinions and formed consensus on the role of public health bodies and specialists in LAQM and the added value that might be achieved as a result of increased integration and collaboration. Linked opportunities, barriers and solutions were also described. Qualitative data were subject to thematic analysis; quantitative data were analysed using descriptive statistics to assess consensus, and the Wilcoxon matched-pairs signed-ranks test to assess response stability.

Results: Consensus opinion confirmed the public health role in LAQM should support both broader mainstream risk assessment and management, and also enabling functions such as communications, research and evidence appraisal, advocacy and leadership. Linked opportunities, barriers and solutions were described so as to facilitate change. Panellists suggested that the added value of increasing integration and collaboration would be more efficient, creative and productive collaboration, meaningful risk assessments and effective action.

Conclusions: The significant role of public health in LAQM is rarely recognised or realised. The findings of this study present a convincing evidence-based case for directing and supporting much-needed change to LAQM so as to increase public health integration, collaboration and impact.

Not only has this study generated new evidence to enhance LAQM policy and practice, it has also confirmed the applicability of the Delphi method in investigating complex environmental public health problems. While some opinions generated relate to Wales' unique circumstances, most were general in context and will have relevance and importance across the UK and in countries beyond where air quality management and public health policy and practice are disconnected.

- Cardiff Clean Air Strategy
- Cwm Taf and Merthyr Tydfil

Climate change

EMBEDDING CLIMATE ADAPTATION IN LOCAL WELLBEING ASSESSMENTS AND PLANS

DRAFT WORKING GUIDANCE FOR PUBLIC SERVICES BOARDS

INTRODUCTION

UNDERSTANDING OUR CURRENT AND FUTURE CLIMATE

- Climate change and climate variability
- Historic climate information for the United Kingdom
- Recent climate impacts in Wales
- Future climate in Wales
- The “weather envelope”

UNDERSTANDING CLIMATE RISKS

- UK Climate Change Risk Assessment (UK CCRA17) Evidence Report: risks and opportunities
- UK CCRA17 Government Report
- Matching UK CCRA17 risks to PSB service areas
- Impact of climate change on local authority service areas
- The LWEC Report Cards
- Key interdependencies and cross-cutting issues

GOOD PRACTICE FOR EFFECTIVE ADAPTATION – OUR EXPERIENCE SO FAR

- IPCC: Good practice for effective adaptation
- IPCC: Constraints to effective adaptation
- IPCC: Co-benefits, synergies and trade-offs between adaptation and mitigation, and among different adaptation responses
- Adaptation pathways
- Our experience to date in Wales – the Climate Change Commission for Wales
- Achieving integration through a visual place-based approach

UNDERTAKING A LOCAL CLIMATE RISK ASSESSMENT

- Agreeing a collective approach
- Involving local stakeholders
- Responding to the risks identified

DEVELOPING THIS GUIDANCE

APPENDICES

- Appendix 1: Key Features of the UKCP09 Projections
- Appendix 2: Summary of UKCP09 Projections for Wales
- Appendix 3: UK CCRA17 Evidence Report – listing of risks and opportunities
- Appendix 4: UK CCRA17 – Extract from Government Report

Joint PHW/NRW guidance to support PSBs understand and consider the UK Climate Change Risk Assessment evidence



GIG
CYMRU
NHS
WALES

Iechyd Cyhoeddus
Cymru
Public Health
Wales